

# RIGHT HOME 73

**righthome**  
real estate consultancy



The project consists of six buildings with a total of 1.400 apartments plus a tower designed as an hotel with a total area of 42.000 square meters.

The shops, restaurants and cafes will be on the first two floors of each building to ensure that all your needs are fully met.

Shared balconies in each building provide you and your family a healthy and refreshing life and entertaining times with neighbors.

Also the gardens that mediate the project give it a pattern of luxury and beauty that difrentiates it from other projects around.

Earthquake protection, surveillance and security systems work 24 hours a day for your privacy.

The project located on the European side of Istanbul in Gunesli district, just right Basin Express highway that connects the two main roads, TEM road and E5 road.


Basin Express area is the first destination for investors in Istanbul because it is very promising in real estate investments especially in the next few years.

The project offers a 3 years reantal guarantee with a fixed returns of 10% and then it can be extended up to 20 years with a variable returns.

There will be a metro station near the project and this will facilitate the movement in Istanbul especially in traffic congestion hours.





An architectural rendering of a modern, multi-story residential building. The building features a curved facade with numerous balconies, some of which have glass railings and potted plants. The ground floor is filled with large glass windows and doors, suggesting a mix of retail and residential spaces. People are depicted walking on the sidewalks and standing near the entrance, giving a sense of scale and activity. The sky is a clear, light blue, and the overall atmosphere is bright and modern.

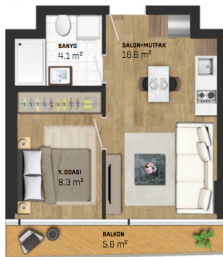
The project has social facilities that offer you the comfort and luxury life you have always dreamed of, such as sport courts, gym, gardens, shops and famous restaurants and cafes.





# FLOOR PLANS

**1+1 A** 53.2m<sup>2</sup>



SALON-MUTFAK	16.6 m <sup>2</sup>
Y. ODASI	8.3 m <sup>2</sup>
BANYO	4.1 m <sup>2</sup>
BALKON	5.6 m <sup>2</sup>

**1+1 B** 76m<sup>2</sup>



SALON-MUTFAK	24.6 m <sup>2</sup>
Y. ODASI	7.2 m <sup>2</sup>
BANYO	4 m <sup>2</sup>
ANTRE	3.6 m <sup>2</sup>
BALKON	7.5 m <sup>2</sup>

## 2+1 A 84.5m<sup>2</sup>



SALON+MUTFAK	18 m <sup>2</sup>
Y. ODASI	12.2 m <sup>2</sup>
ODA	6.1 m <sup>2</sup>
E. BANYO	3.4 m <sup>2</sup>
BANYO	3.2 m <sup>2</sup>
HOL	2.6 m <sup>2</sup>
BALKON	12.2 m <sup>2</sup>

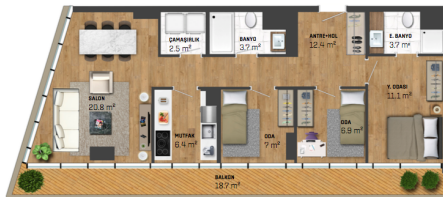
## 2+1 B 86m<sup>2</sup>



SALON+MUTFAK	17.3 m <sup>2</sup>
Y. ODASI	11.8 m <sup>2</sup>
ODA	5.7 m <sup>2</sup>
E. BANYO	3.1 m <sup>2</sup>
BANYO	3.2 m <sup>2</sup>
ANTRE+HOL	2.1 m <sup>2</sup>
BALKON	11.3 m <sup>2</sup>



**3+1 A** 137.4m<sup>2</sup>



BALCON	20.8 m <sup>2</sup>
Y. ODASI	11.1 m <sup>2</sup>
ODS	7 m <sup>2</sup>
ODS	6.9 m <sup>2</sup>
E. BANYO	3.7 m <sup>2</sup>
BANYO	3.7 m <sup>2</sup>
ÇAMAŞIRLIK	2.5 m <sup>2</sup>
MUTFAK	6.4 m <sup>2</sup>
ANTRE-HOL	12.4 m <sup>2</sup>
BALCON	18.7 m <sup>2</sup>

## ABOUT US


Right Home is a leading company specializing in real estate consultancy and brokerage.

We help buyers to buy and sellers to sell.


We provide luxury apartments, smart homes, elegantly designed offices, modern constructions and all consultancy services.


Our head office located in Istanbul, Turkey.


## CONTACT US


 [www.righthome.com.tr](http://www.righthome.com.tr)


 [info@righthome.com.tr](mailto:info@righthome.com.tr)

 +90 212 573 51 93

 [righthome\\_tr](https://www.instagram.com/righthome_tr)

 [righthometr](https://www.facebook.com/righthometr)

 [righthome\\_tr](https://www.twitter.com/righthome_tr)

 [righthome](https://www.youtube.com/righthome)