

RIGHT HOME 113

righthome
real estate consultancy



ABOUT THE PROJECT

It is a housing project constructed on the European side of Istanbul, in Beylikduzu district. It was built on a total area of 28,000 square meters, and it consists of 7 buildings containing 477 apartments.

It contains an integrated leisure facility with high-quality materials and large green spaces. The materials used in the building has a high quality, and the project characterized by its special architectural touches.

THE PROJECT SITE

The unique and distinctive location of the project in Beylikduzu district, near to the E5 motorway which makes it lively and active.

Beylikduzu district considered with its high return on investment, and it is representing the modern center of Istanbul.

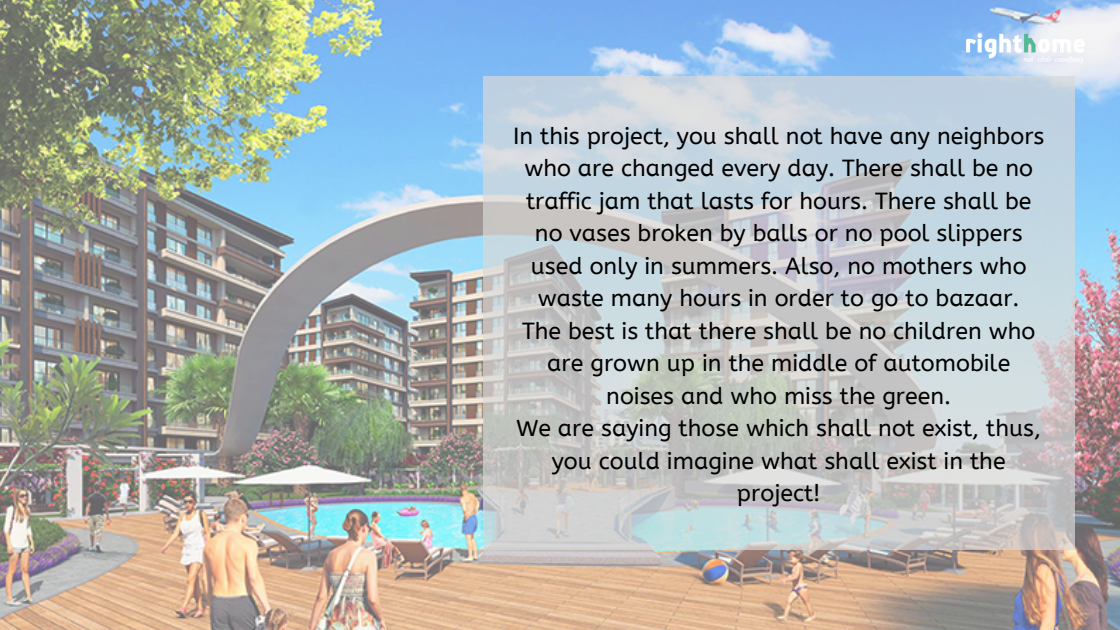
The distinctive location of the project, near to the E5 highway, which is the most important way of transportation in Istanbul that the Metrobus passes through it. It is close to a lot of major universities, schools, hospitals and other essential services.











In this project, you shall not have any neighbors who are changed every day. There shall be no traffic jam that lasts for hours. There shall be no vases broken by balls or no pool slippers used only in summers. Also, no mothers who waste many hours in order to go to bazaar. The best is that there shall be no children who are grown up in the middle of automobile noises and who miss the green. We are saying those which shall not exist, thus, you could imagine what shall exist in the project!

"THE MOST NATURAL" MODE OF THE CITY!

The project invites you to a peaceful world without leaving the city privileges such as the lobby, security, cleaning, technical services, parking, fitness, sauna and indoor pool. You will have more urban life than others natural landscape with a green landscape of large common areas.

ATTRACTION CENTER OF ISTANBUL, BEYLIKDUZU

Beylikduzu that is located on E5 highway is one of the counties reflecting the modernizing aspect of Istanbul in the best manner.

Beylikduzu transforms life into pleasure with its regular urban planning, major shopping centers, modern hospitals, private schools and rich cultural activities.

LIFE CENTRE

You will not have a problem of transportation difficulty in this project.

Metrobus, bus stops and E5 highway is just 100 m away from you. Shopping centers such as Marmara park Mall, Migros, Bauhouse and Media Market are on your doorstep.

THE MOST DELICIOUS PLACE OF THE LIFE

You will also find the most natural
and unique form of taste in this
project.

You will have the sweetest moments
of life with its unique restaurants
here and you will be fascinated with
the taste naturally.

YOU WILL ALWAYS BE HAPPY

It is easy to swim in a beautiful pool, but swimming in your pool located within greeneries is quite different.

You and your loved ones will approach the dreams in each fathom in this project.

NATURALITY IS IN OUR SPIRIT

You will feel the unique
perfection in the depths of
your spirit with fascinating spa
experience in this project.

You will be lost in this
fascinating world and you will
regenerate fairly.



IT IS SO COMFORTABLE THAT..

Everything is considered for your
comfort here.

You will have irresistible attraction to
happiness and comfort.

You will realize another dream in this
project every day.

YOU ARE SAFE

You are in the safest place of nature because you will live in peace at your home with unique security systems equipped with advanced technology cameras.



HOW MUCH AREA IS REQUIRED FOR YOUR HAPPINESS?

2+1, 3+1 and 4+1 flat options designed in compliance with family concept combine comfort with ergonomics in this project. Aesthetic styles of modern architecture has been turned into comfortable living spaces by combining with superior quality of used construction materials.



A BLOCK 4+1
251.79 M2





A BLOCK 4+1
241.58 M2





A BLOCK 3+1
200.05 M2





A BLOCK 3+1
188.99 M2





A BLOCK 2+1
145.66 M2



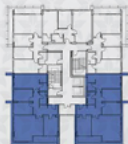
A BLOCK 2+1
140.42 M2





A BLOCK 2+1
120.28 M2

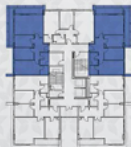




B1=B3 BLOCK 3+1
203.58 M2

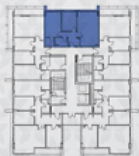


B1=B3 BLOCK 2+1
156.52 M2





B1=B3 BLOCK 2+1
110.28 M2





C BLOCK 4+1
257.90 M2





C BLOCK 2+1
143.32 M2





D BLOCK 1+1
85.45 M2





D BLOCK 1+1
79.37 M2





ABOUT US


Right Home is a leading company specializing in real estate consultancy and brokerage.


We help buyers to buy and sellers to sell.


We provide luxury apartments, smart homes, elegantly designed offices, modern constructions and all consultancy services.


Our head office located in Istanbul, Turkey.


CONTACT US


 www.righthome.com.tr


 info@righthome.com.tr

 +90 212 573 51 93

 [righthome_tr](https://www.instagram.com/righthome_tr)

 [righthometr](https://www.facebook.com/righthometr)

 [righthome_tr](https://www.twitter.com/righthome_tr)

 [righthome](https://www.youtube.com/righthome)