

RIGHT HOME 164

righthome
real estate consultancy



ABOUT THE PROJECT

It is a housing project that is being built on a land area of 41.168 square meters.

The project consists of 10 blocks that contain 724 apartments and 52 commercial units.

The project offers different apartment options ranging from 2+1 to 4+1, apartments with garden and apartments with a terrace. High-quality materials used in constructing the project.

THE PROJECT SITE

The project located on the European side of Istanbul in Bahcesehir district, the prestigious and sophisticated face of Istanbul and the new attraction for real estate investments.

Bahcesehir is known for its rapid urban developments and its growing projects.

Also, it is characterized by its nature, gardens and green spaces.

The project is close to Kanal Istanbul, the highways, Ataturk International Airport, and Istanbul Third Airport.

The project located in a vital area near metro, schools, universities, hospitals, parks and other essential services.

The project located on the connection road between 2nd and 3rd highway.

Metro Station will be in a walking distance from the project, which will be ready to use after 3 years.





There is 320.000 square meters archeological site in front of the project so the view of the project will not be closed.







In this project, you shall not have any neighbours who are changed every day. There shall be no traffic jam that lasts for hours. There shall be no vases broken by balls or no pool slippers used only in summers. Also no mothers who waste many hours in order to go to bazaar. The best is that there shall be no children who are grown up in the middle of automobile noises and who miss the green. We are saying those which shall not exist, thus, you could imagine what shall exist in the project.

THOSE DREAMS WHICH ARE AS PURE AS WATER SHALL BE REAL

We had only our dreams in our hands, as pure as water, as colorful as Istanbul. Those dreams shall become true in this project. You shall touch the blue with fountains which are located across the project and you shall find the peace in lush green sitting decorated with colorful flowers.

CHILDREN SHALL BE SATISFIED WITH EACH TONE OF GREEN

Gardens which are full of flowers and comfortable sitting areas shall accompany our children while they play in safety in those pedestrianised. When you see this project, you shall feel that you are at the right place for your beloved ones.



PRIVILEGES SHALL ENLIGHTEN YOUR NIGHT

We create living areas as with less
storeys, thus we try to
present the highest comfort to you.
We turn the beauty of night and
day into a truth in the project.



THERE SHALL BE NO TIREDNESS!

You shall renew yourself with
Turkish bath and sauna sessions
in this project.

You shall start everyday
energetically and you shall enjoy
your life.

YOUR VEHICLE SHALL BE SAFE AS YOUR BELOVED ONES

Our safety and security is our priority in this project. When your beloved ones live safe in this project which is watched by security camera system for 7/24; your vehicle shall be safe as your beloved ones in the wide car park.



GREEN AND BLUE ARE UNLIMITED IN THIS PROJECT

When you take your step from your own house in this project, wonderful harmony of green and blue shall welcome you. An archeological park with 380.000 m² area, which is located just In front of the project, prevents constructions to be started in that region. Thus, you could enjoy the life which is full of deep blue, green and joy!



ADORABLE KITCHENS SHALL MEET WITH THE BEST TASTES

Kitchens, which are so elegant and designed with technology, shall become places which could be shown to visitors/guests with proud. While you start your day with an enjoying breakfast in your balcony, the beauty of your kitchen shall be spread abroad.





righthome
real estate consultancy

FLOOR PLANS

2+1-A

A1-A2-C1-C2 Block | Normal Floor

righthome
real estate consultancy



Key Plan



Layout Plan



4th FLOOR LAYOUT

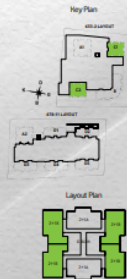


Net Area Subjected to Sales : 84,43 m²
Gross Area Subjected to Sales : 127,84 m² - 128,15 m²
: 127,10 m² - 124,95 m²

2+1-B

C1-C2 Block | Normal Floor

right home



Net Area Subjected to Sales : 85,67 m²
Gross Area Subjected to Sales : 126,45 m² - 128,72 m²

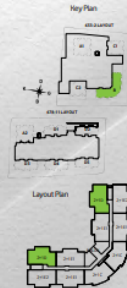
B Block | Normal Floor


$$: 115,39 \text{ m}^2 - 115,57 \text{ m}^2$$

2+1-D

B Block | Normal Floor

righthome



Net Area Subjected to Sales : 86.52 m²
Gross Area Subjected to Sales : 117.61 m²

B Block | Normal Floor



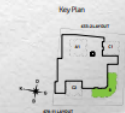
Gross Area Subjected to Sales : 114,45 m² - 115,66 m²



2+1-E2

B Block | Normal Floor

righthome

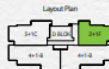


Net Area Subjected to Sales : 86,34 m²
Gross Area Subjected to Sales : 117,15 m²

2+1-F

D3-D4-D5 Block | 1st Floor

righthome
real estate consultancy

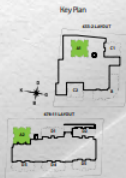


Net Area Subjected to Sales : 101,82 m²
Gross Area Subjected to Sales : 136,28 m² - 136,95 m²

3+1-A

A1-A2 Block | Normal Floor

right**home**



Net Area Subjected to Sales : 111,81 m²
Gross Area Subjected to Sales : 168,21 m² + 168,61 m²

3+1-C

righthome
for your lifestyle

D1-D2-D3-D4-D5 Block | Normal Floor



Key Plan



Layout Plan



402-11 LAYOUT



Net Area Subjected to Sales : 124,87 m²
Gross Area Subjected to Sales : 161,87 m² - 168,27 m²

4+1-A

D1-D2-D3-D4-D5 | Ground Floor

righthome



Key Plan



Layout Plan



Net Area Subjected to Sales

: 142.02 m²

Net Area Subjected to Sales + Open Balcony

: 147.78 m²

Gross Area Subjected to Sales

: 192.11 m² - 202.97 m²

4+1-B

righthome
for every occasion

D1-D2-D3-D4-D5 Block | Normal Floor



Key Plan



Layout Plan



4+1-B LAYOUT



Net Area Subjected to Sales : 144.99 m²
 Net Area Subjected to Sales + Open Balcony : 155.02 m²
 Gross Area Subjected to Sales : 200.27 m² - 208.19 m²

ABOUT US

Right Home is a leading company specializing in real estate consultancy and brokerage.


We help buyers to buy and sellers to sell.


We provide luxury apartments, smart homes, elegantly designed offices, modern constructions and all consultancy services.


Our head office located in Istanbul, Turkey.


CONTACT US

 www.righthome.com.tr


 info@righthome.com.tr

 +90 212 573 51 93

 [righthome_tr](#)

 [righthome_tr](#)

 [righthometr](#)

 [righthome](#)