

RIGHT HOME
265

AREA
AVCILER



RIGHTHOME.COM.TR

righthome
real estate consultancy

Project Overview



Project area
3.300 M²

It is a mixed project developed by a well-known construction company in Esenyurt, on the European side of Istanbul.

The project consisting of a single block, that includes 252 flats, 56 offices, and 32 commercial areas.

The project offers apartment options of 1+1, 2+1, and 3+1, with areas ranging between 88- 198 square meters.

The project built on a land area of 3.300 square meters and the number of floors in the Building is 26.

Project Site

The project is located on the European side of Istanbul in the Avcilar district.

Avcilar area is distinctive with its sea views and its closeness to the Sea of Marmara.

The project is located in the middle of the city, you can easily reach all your needs such as school, hospital, metro, university, airport, shopping mall, and other essential services.

Metrobus
Station

2

Minutes

Florya
Area

10

Minutes

E5
Highway

2

Minutes

Istanbul
Airport

40

Minutes

Pelican
Mall

3

Minutes

Istanbul
University

2

Minutes



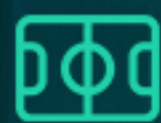
Project's Features



Elevator



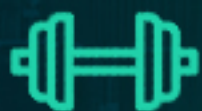
Swimming
Pool



Play
Grounds



Garden



Gym



Security



Parking



Project's Photos



Project's
Photos



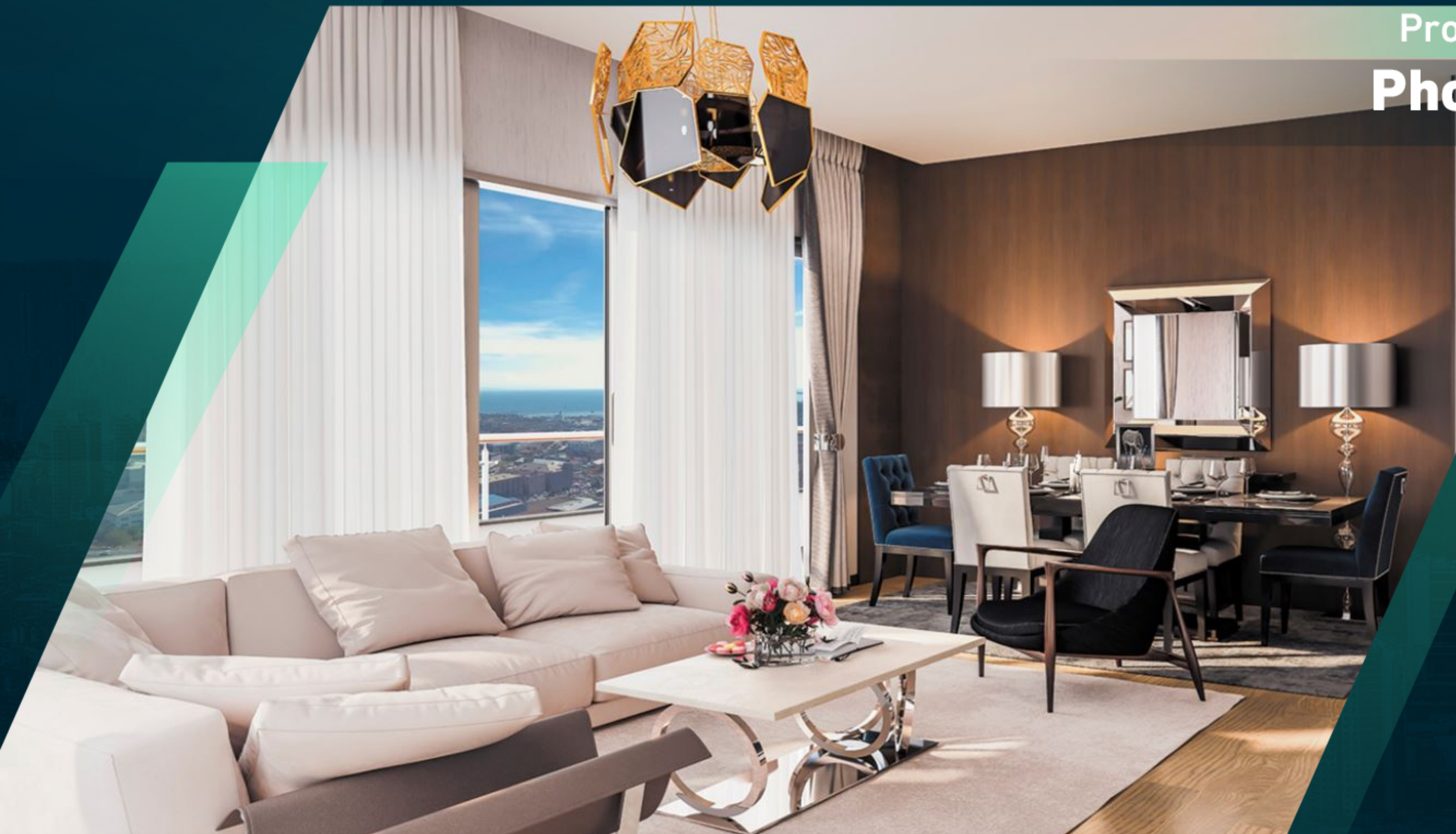


Project's
Photos

Project's Photos



Project's
Photos



Project's
Photos



Project's
Photos



Project's
Photos



Project's
Photos



Project's
Photos



About Us

Right Home is a leading company specializing in real estate consultancy and brokerage.

We help buyers **to buy** and sellers **to sell**.

We provide luxury apartments, smart homes, elegantly designed offices, modern constructions and all consultancy services.

Our head office located in **Istanbul**, Turkey.

righthome
real estate consultancy

 righthome_tr
 righthome_tr
 righthome
 righthometr
 +90 212 573 51 93
 www.righthome.com.tr
 info@righthome.com.tr