

RIGHT HOME

AREA

ESENYURT

017

RIGHTHOME.COM.TR

righthome  
real estate consultancy



## Project Overview



Project area  
**8.420** M<sup>2</sup>

Residential and investment project located on the European side of Istanbul close to the main roads.

The total area of the project is 8.420 sqm, and the green area is 2.500 sqm.

The project consists of 3 blocks and contain 400 housing units and 48 commercial units.



## Project Overview

The A block has 34 floors and contains 1+1 and 2+1 units, in addition to 2+1 and 3+1 duplex with terrace options. The B block has 13 floors and contains 2+1, 3+1 and 4+1 units with terrace options. The C block contains 48 commercial units.

This project, which will make your life easier with a shopping mall located a few steps away from your home, in the center of the transportation network, in the fastest developing area of Istanbul, offers a total of 400 residences and 48 commercial independent units in different alternatives from 1+1 to 3+1.

It is built on the concept of a happy and peaceful family life, very close to transportation opportunities in the city with its landscape areas, ornamental pools, children's playgrounds and fitness areas, and offers great opportunities in terms of investment.





## Project Site

The project is perfectly situated in the heart of Esenyurt area with easy access to all facilities and any kind of entertainment.

Living at walking distance to Haramidere Sanayi Metrobus station and next to the main arterial roads of Istanbul.

By E5 and E6 highways close to your home, you will easily get any direction in Istanbul.

In addition to the Metrobus there are buses and minibuses deployed in the area and also soon will be the opening of the new metro line, which will connect the area in the center of Istanbul and also to the third airport.

The project is serviced by all services. In terms of health, a three-minute hospital and a seven-minute hospital and five other hospitals are less than 10 minutes away. There are also a lot of public and private schools and universities that teach in English and Arabic





## Project Site

The shopping route is just one minute away from Migros and five minutes from Torium Mall and three other malls, as well as proximity to surrounding restaurants, cafes and popular markets.

Esenyurt area is one of the most active and vital areas for real estate investment in Turkey in the vast metropolitan city of Istanbul. Large number of projects are rising. A big number of mega projects are continuing to be established in the area and suitable apartments can be found for all segments of the community in the district. Pretty close location to the E5 and the TEM highways with the associated roads, making it easy to reach all parts of the city, which leads to a preference for large brands in the mega projects.





## Project Site

**Metrobus**

**2**

Minutes

Istinye  
**Hospital**

**3**

Minutes

Medlife  
**Hospital**

**7**

Minutes

TEM  
**Highway**

**3**

Minutes

Esenyurt  
**University**

**7**

Minutes

Gelisim  
**University**

**3**

Minutes

Marmara Park  
**MALL**

**10**

Minutes

Torium  
**Mall**

**3**

Minutes





## Project's Features



Elevator



Security



Parking



Garden



Swimming  
Pool



Play-  
grounds



Gym



Restaurant  
and Cafe





Project's  
**Photos**





## Project's Photos



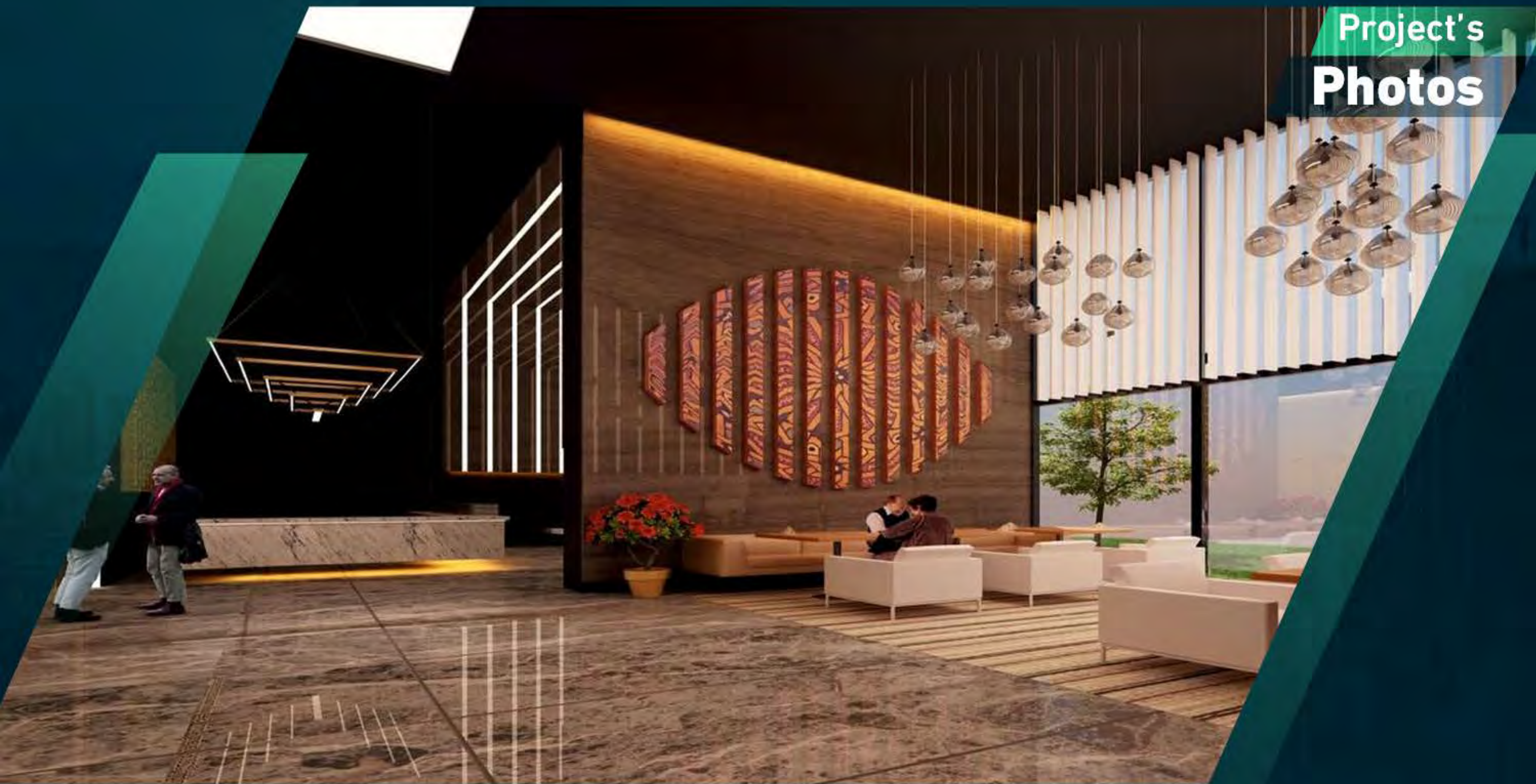


Project's  
**Photos**





## Project's Photos





Project's  
**Photos**



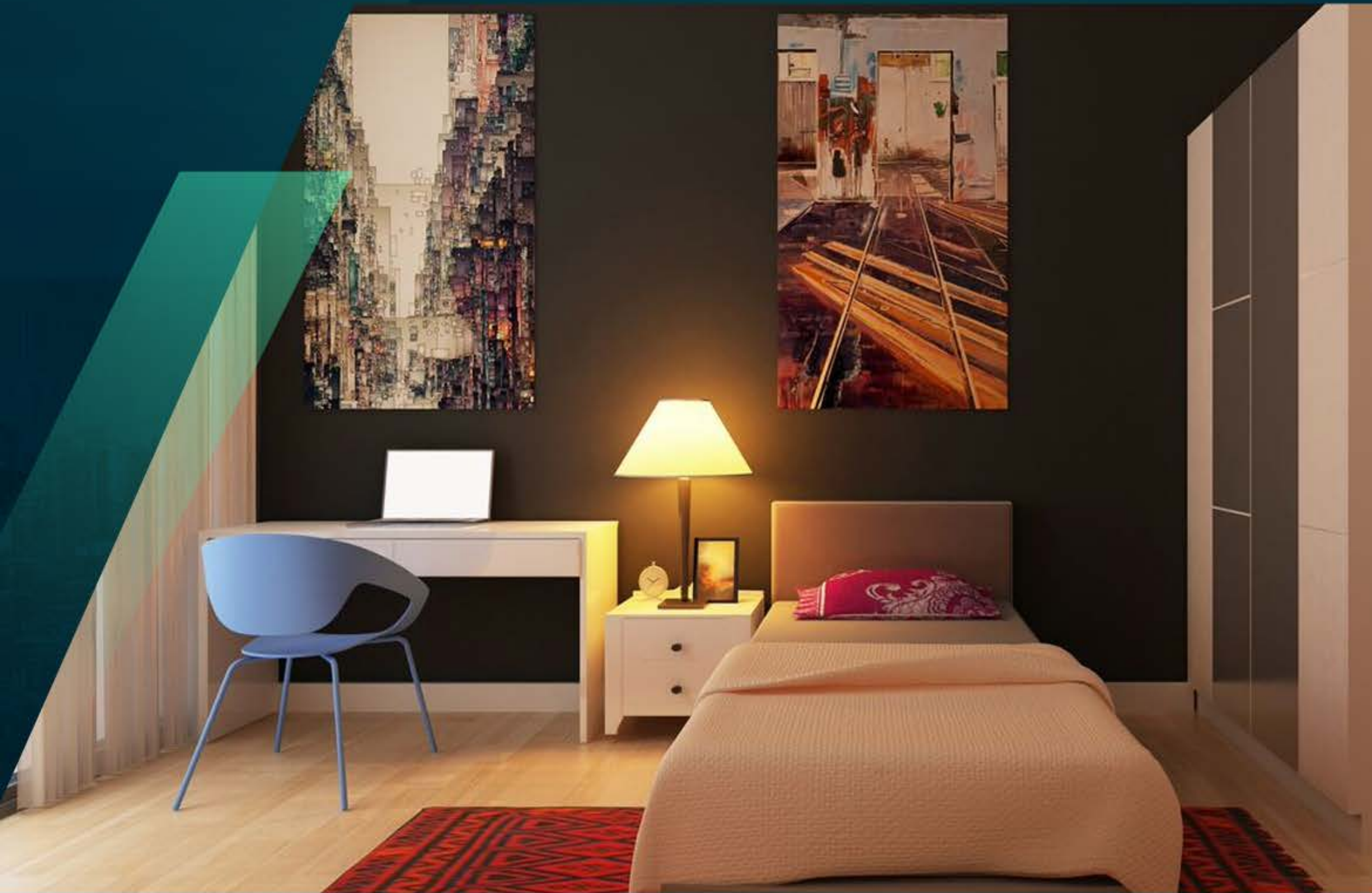


Project's  
**Photos**





Project's  
**Photos**





## About Us

**Right Home** is a leading company specializing in real estate consultancy and brokerage.

We help buyers **to buy** and sellers **to sell**.

We provide luxury apartments, smart homes, elegantly designed offices, modern constructions and all consultancy services.

Our head office located in **Istanbul**, Turkey.

**righthome**  
real estate consultancy

 righthome\_tr  
 righthome\_tr  
 righthome  
 righthometr  
 +90 212 573 51 93  
 www.righthome.com.tr  
 info@righthome.com.tr