

RIGHT HOME

AREA

BEYLIKDUZU

513

RIGHTHOME.COM.TR

righthome  
real estate consultancy



Project

# Overview



It is a residential and investment project, located in Beylikduzu, 2 minutes from the sea, suitable for families.



## Project Overview



The project consists of 10 blocks that contain 505 flats and 20 shops. The apartment types in the project are 2+1 and 3+1, which make it a family concept project. The project has a construction area of 83.465 M2, and the land area of the project is 16.110 M2.



## Project Site

The project located in Beylikduzu area, on the European side of Istanbul.

Ideal location for a relaxing and valuable life, where the heart of the city is just steps away.





## Project Site

The project will boost your quality of life with distinguished education institutions, popular shopping and cultural activity centers, hospitals and health care institutions nearby.





# Project Details



**Marmara Park**

**15**  
Minutes

**Metrobus**

**10**  
Minutes

**Perlavista Mall**

**10**  
Minutes

**Hospitals**

**3**  
Minutes

**Marina**

**15**  
Minutes

**Gurpınar Beach**

**2**  
Minutes



# Project Features



Garden



Elevator



Play-  
grounds



Gym



Swimming  
Pool



Sauna



Parking



Security



Available  
Transportation



Turkish  
Bath



Restorant  
And Cafe



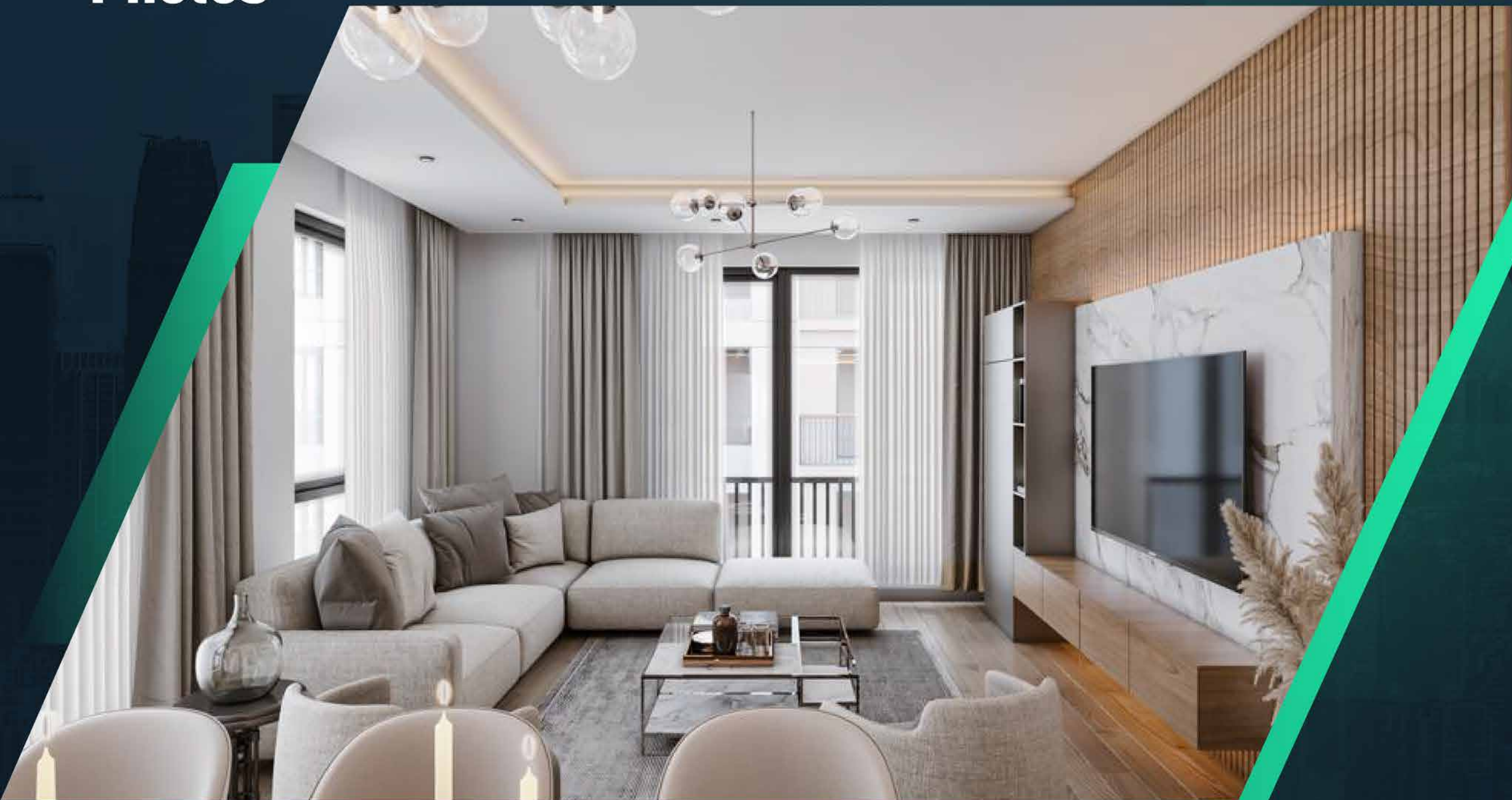


# Project Photos





# Project Photos





## About

## Us

**Right Home** is a leading company specializing in real estate consultancy and brokerage.

We Help buyers buy, manage and resale.

We provide luxury apartments, smart homes, elegantly designed offices, modern constructions and all consultancy services, and customer care.

Our head office is located in **İstanbul**, Turkey.

**righthome**  
real estate consultancy

